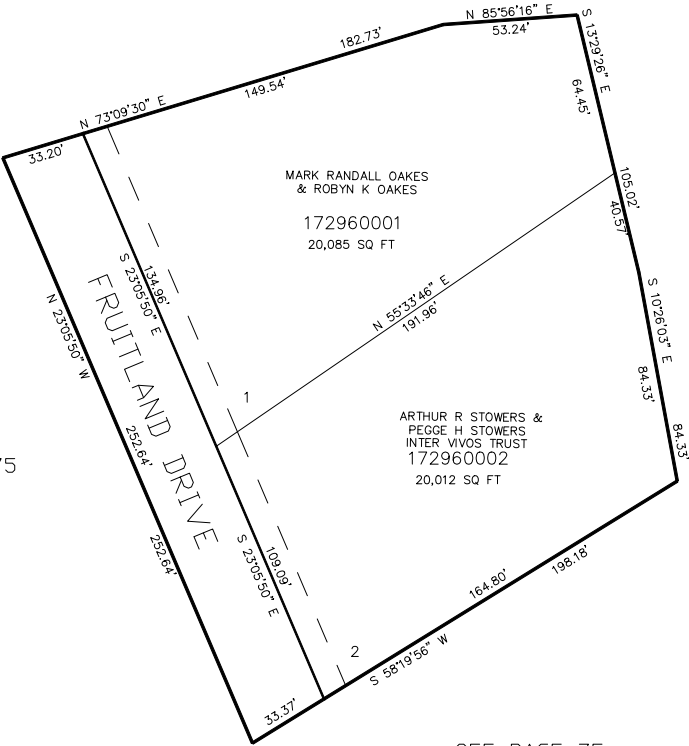


PART OF THE S.E.1/4, OF SECTION 33, T.7N., R.1W., S.L.B. & M.  
**GARDNER SUBDIVISION**

IN NORTH OGDEN CITY  
SCALE 1" = 40'

TAXING UNIT: 10

SEE PAGE 75



SEE PAGE 75

SEE PAGE 75

SEE PAGE 75

FOR COMPLETE ENG DATA SEE  
ORIGINAL DEDICATION PLAT IN  
BOOK 59, PAGE 93 OF RECORDS.

10' UTILITY & DRAINAGE EASEMENTS EACH  
SIDE OF PROPERTY LINES AS INDICATED  
BY DASHED LINES EXCEPT AS OTHERWISE  
SHOWN.